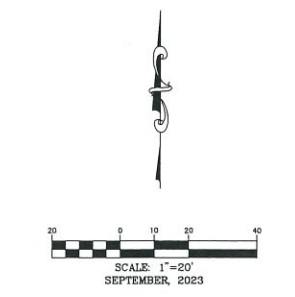
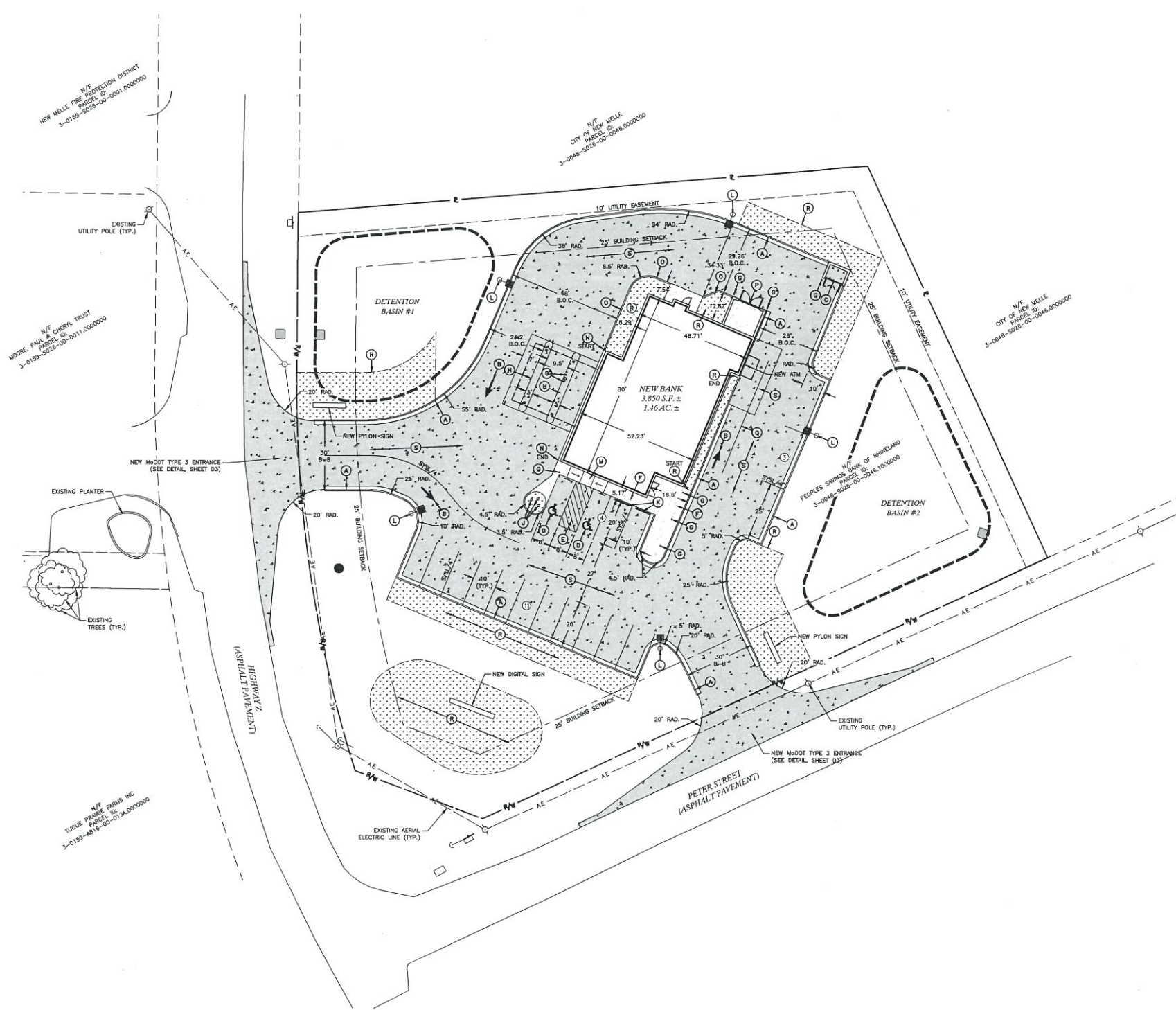


# SITE PLAN



**LEGEND**

EXISTING	PROPOSED
— P —	— P —
— R/W —	— R/W —
— B/S —	— B/S —
— E —	— E —
— A —	— A —
— U —	— U —
— S —	— S —
— I —	— I —
— G —	— G —
— F —	— F —
— T —	— T —
— L —	— L —
— C —	— C —
— A —	— A —

**PARKING DATA**

NEW BUILDING	3,830 S.F.
STANDARD SPACES	16 SPACES
ACCESSIBLE SPACES	2 SPACES
TOTAL PARKING	18 SPACES
RATIO	4.67/1,000 S.F.*

\*CITY OF NEW MELLE REQUIRES 16 SPACES

- SITE LEGEND**
- (A) 24" CONCRETE CURB AND GUTTER. SEE DETAIL, SHEET D1.
  - (B) TRAFFIC FLOW ARROWS. SEE DETAIL, SHEET D1.
  - (C) DUMPSTER ENCLOSURE. REF. ARCH. PLANS
  - (D) ACCESSIBLE PARKING STALL WITH SIGNAGE AND STRIPING SEE DETAIL, SHEET D1.
  - (E) STRIPING SHALL BE PAINTED SWSL/4" AT 2'-0" O.C. @ 45° TO THE PARKING SPACE.
  - (F) CONCRETE SIDEWALK WITH INTEGRAL CURB. SEE DETAIL, SHEET D1
  - (G) PIPE BOLLARD. SEE ARCH. PLANS.
  - (H) CONCRETE ISLAND. REF. ARCH. PLANS
  - (I) NOT USED.
  - (J) FLAG POLES. REF. ARCH. PLANS
  - (K) CONCRETE WHEEL STOP. SEE DETAIL, SHEET D1.
  - (L) LIGHT POLE. SEE DETAIL, SHEET D2.
  - (M) ACCESSIBLE RAMP. SEE DETAIL, SHEET D1.
  - (N) 12" WIDE CONCRETE CURB. SEE DETAIL, SHEET D1.
  - (O) 8" WIDE CONCRETE CURB. SEE DETAIL, SHEET D1.
  - (P) MECHANICAL EQUIPMENT ENCLOSURE. REF. ARCH. PLANS
  - (Q) 4" SOLID YELLOW STRIPE.
  - (R) LANDSCAPE AREA (REF. ARCH. PLANS)
  - (S) STANDARD-DUTY CONCRETE PAVEMENT. SEE DETAIL, SHEET D1.

**PAINT STRIPING LEGEND**  
STSL/4" - SINGLE YELLOW SOLID LINE/ 4" WIDE

**PRELIMINARY DRAWING**  
FOR REVIEW PURPOSES ONLY  
NOT TO BE USED FOR CONSTRUCTION

**eddy DESIGN GROUP**  
16759 MAIN STREET, SUITE 205  
WILDWOOD, MO 63040 | 314 463 0400  
www.eddyDesignGroup.com

ARCHITECT | eddy Design Group, LLC  
MO STATE CERTIFICATE OF AUTHORITY #2019011824

**EXCELSIOR ENGINEERING, LLC**  
CIVIL ENGINEER | Excelsior Engineering, LLC  
TELEPHONE: 573 291 3159  
EMAIL: EXCELSIOR\_ENGINEERING@OUTLOOK.COM  
ENGINEERING CORPORATION #2017008527  
JOHN NILGES, PE, CPESC, CFM

**CASE Engineering Inc.**  
716 Menz Court  
St. Louis, MO 63026  
T 636.349.1600  
F 636.349.1730  
CERTIFICATE OF AUTHORITY NO. 001498  
STRUCTURAL ENGINEER | Case Engineering Inc.

Peoples Savings Bank  
New Branch - New Melle  
Hwy Z at Peter Street  
New Melle, MO 63385

DATE:

No.	Date	Description
	09/01/2023	Progress Set
	09/08/2023	Progress Set

ENGINEER OF RECORD:  
  
John Robert Nilges - Professional Engineer  
MO# PE-201300609

Project Number:  
Sheet Title:  
SITE PLAN

**C1**

DWG NAME: P:\31-8882 - Peoples Savings Bank - New Melle, MO\AutoCad Drawings\8882 - Plan Sheet\05 SITE PLAN.dwg LAYOUT TAB: SITE PLOTTED ON: Sep 08, 2023 - 1:23pm PLOTTED BY: jimgier